





Original Drainoflex-Rubber-Drain-Mats

 **70 % less dung**

 **70 % less straw**

 **70 % less personnel**

 **5 Years Garanty**

Original Drainoflex Rubber Draino Mats

For more than 48 Years in practice use

*With less quantity you
should not be satisfied*



Original Drainoflex-Drainage-Stallbodenbelag



48 Years Drainoflex Rubber Drain Mats since 1975 until now

Animal Hospitation Referenzen No. 1 in Hospitation

Uni Klinik Hannover
 Uni Klinik Gießen
 Uni Klinik München
 Uni Klinik Leipzig
 Dr. Cronau Bochum
 Dr. Ende Isernhagen
 Dr. Pieper Wahlstedt
 Dr. Böckenhof Kerken
 Dr. Breuer München
 Dr. Brehm München
 Dr. Jarke Hamburg
 Dr. Huskamp Hochmoor
 Dr. Martens Wahlstedt
 Dr. Wiesenecker Groß-Gerau
 Dr. Stechele Bobingen
 Dr. Asendorf Oberndorf
 Dr. Gerweck Bretten
 Dr. Meiering Fulda
 Dr. Ros Butzbach
 Dr. Stanger Sindelfingen
 Dr. Allmeling Börnsen

Olympic Winners & Worldchampions

Meredith Michaels Beerbaum
 Ludger Beerbaum
 Hans-Günter Winkler
 Klaus Balkenhol
 Nelson Pessoa
 Rodrigo Pessoa
 Nadine Capellmann
 Paul Schockemöhle
 Alwin Schockemöhle
 Lars Nieberg
 Hugo Simon
 Pierre Durand
 Sissy Max-Theurer
 Alfons Lüttke Westhus
 Gerd Wildfang
 Martin Schaudt
 Heidi Robbiani
 Otto Hofer
 Gina Capellmann
 Herrmann Schridde
 Andreas Helgstrand
 David Broome
 Dr. Uwe Schulten-Baumer
 Nicole Uphoff

Drainoflex References No. 1 in Studs

Landgestüt Celle	
Landgestüt Schwaiganger	
Landgestüt Marbach	
Gestüt Vorwerk	Cappeln
Gestüt Klatte	Lastrup
Gestüt St. Ludwig	Wegberg
Gestüt Tannenhof	Wiesbaden
Gestüt Fährhof	Bremen
Gestüt Löhr	Schnaittach
Gestüt Kothe	Wacken
Gestüt Velin	Dänemark
Gestüt Fichtenhof	Neufarn
Gestüt Forstwald	Weilerswist
Gestüt Amselhof Walle	Winsen
Rainbow Valley Ranch	Ungarn
Gestüt Storch	Tannheim
Gestüt Famos	Legenhausen
Gestüt Camelot	Bad Oldeslohe
Deckstation Tebbel	Emsbüren
Gestüt Peterhof	Perl-Borg
Blue Hors	Randbol
Hengststation Holtwiesche	Gescher
Gut Schönweide	Grebin
Gestüt Kastanienhof	Sage
Gut Wetttkam	Otterfing

Jumping* Dressage* Military* Racing* Distance* Polo* Events* Exhibitions

Deutsches Olympiadekomitee
 Royal Stables Oman
 Jamahazentrum Japan
 TSG Rodderberg, Bonn
 Musée Cheval Frankreich
 Metro Police Kanada
 Staatspräsident Betancourt
 Olympiazentrum Barcelona
 Griffith Park, Los Angeles
 Moskauer Sportclub
 Südwestfunk Stuttgart Sportstudio
 Lufthansa, Flying Tigers, KLM
 Graf Fürstenberg, Donaueschingen
 König Carlos Spanien
 Königin Beatrix Holland
 Baron Eduard von Rothschild
 Anja Rietbrock

Fam. Weinberg
 Michael Rüping
 Elmar Gundel
 Karl Schneider
 H.G. Goskowitz
 Christian Ahlmann
 Peter Charles
 Willi Melliger
 Anja Plönske
 Bernhard Winkel
 Schmitz-Heinen
 Martin Schaudt
 Holger Hetzel
 Yves Bienaime
 René Tebbel
 Philipp Weishaupt
 Mylene Kruse

Uli Kasselmann
 Isabell Werth
 J. Hinnemann
 Dressurland Wels
 Henk van de Pol
 Falk Stankus
 Jeff McVean
 Peter Remmert
 Heike Kemmer
 Dr. Schulten-Baumer
 Heike Gillmann
 Walter Feldmann
 Jürgen Matthies
 Harry Klugmann
 DJ Paul van Dyk
 Rohla Strauss
 Reitverein Elmlohe

Worldwide export delievery in 37 countries for more than 48 years:

Norwegen	Brasilien	Schweiz	Deutschland	Dänemark	Israel	Polen
Luxemburg	Dubai	Belgien	Frankreich	England	Russland	Croatia
Schweden	Italien	Holland	Australien	USA	Portugal	
Österreich	Japan	Spanien	Argentinien	Ungarn	Rumänien	
Slowenien	Island	Kanada	Lichtenstein	Oman	Finnland	



Original Drainoflex-Rubber-Drain-Mats

Our most spectacular commisions!



The Carnival in cologne. We put the mats in front of the dome to prevent a slip of the horses. Sponsoring made by Drainoflex!

The castle Chantilly near Paris with the hipodrome and forest. We put the mats in a show ring in the museum in the castle from the Familie Yves Bienaime. They make horse shows there. Make a visit, it's very nice!



For the Majestät Sultan Zaboos Bin Said we sold 2000 qm rubber. A big deal to Oman!
The next deal to Oman was to the Royal Oman Police Mounted Divisional in Muscat!

Mats for the Metro Police Mounted Unit in Toronto, Kanada was very nice!



Mats for the Lufthansa-Horse-Transport-Containers, Very important!
After this deal we become KLM Nederlands and Flying Tigers, USA with Horse-Transport-Containers!

Spektakular too:

- The Royal House of Madrid King Juan Carlos from Spain
- The Former President Betancourt of Columbien, City of Medelin
- The Royal Stables from the former Queen Beatrix from the nederlands,
- Mr. Baron Eduard from Rothschild, Stud Drei Linden in Bonn
- Mr. Major Jurij Luschkow and his wife Jelena Baturina from Moskau
- Madeleine Rohla-Strauss, Granddaughter from the composer Richard Strauss



Original Drainoflex-Rubber-Drain-Mats



The Original!

with the key advantages:

- ✔ Sturdy, square stilts
- ✔ Large outflow channels
- ✔ No edges and corners
- ✔ Smooth operation
- ✔ Long-term urine-resistant
- ✔ tunnel resistance
- ✔ Significant litter savings
- ✔ Simple, fast mucking
- ✔ 70% reduction in manure

Drainoflex stable floor coverings have been declared by experts to be future-oriented and are the right measures to be taken to sensibly counteract shortage of straw and personnel and dung problems. They ensure anti-slip, heat-storing, hygienic surfaces and facilitate procurement and storage of straw and dung.

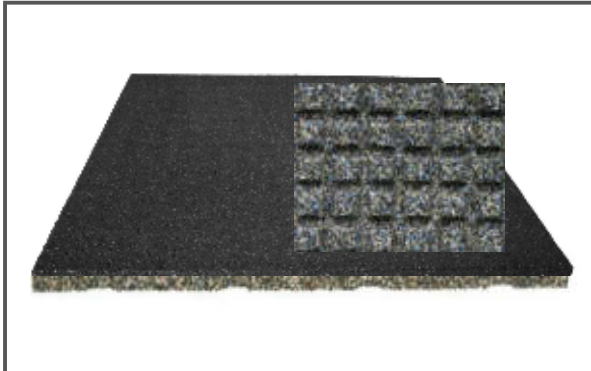
The highly resistant mats are laid loosely in the horse box and can be combined to choice with straw, shavings, turf or saw dust. By using Drainoflex drainage stable floor coverings animals have been kept for more than 45 years in the appropriate, healthy and rational manner as demanded for horses.

The horses always have dry, elastic and warm bedding. Tension given through standing on hard ground is completely free of swellings. The hooves can no longer break off by pawing the ground and even when used for a longer period of time good conditions in the stable are ensured without ammoniac forming and the generation of stable outdours.

The challenge against:

- | | |
|-------------------|-----------------------|
| — Straw shortage | — Much work |
| — Costly disposal | — Urine stench |
| — Hard stand area | — Bare concrete floor |

More than 48 Years Drainoflex-Rubber-Mats



Size 1000 x 1000 x 50 mm
weight: 44 kg

Drainofixx Country 50 50 mm thickness

Drainoflex-Megadrain 50 mm

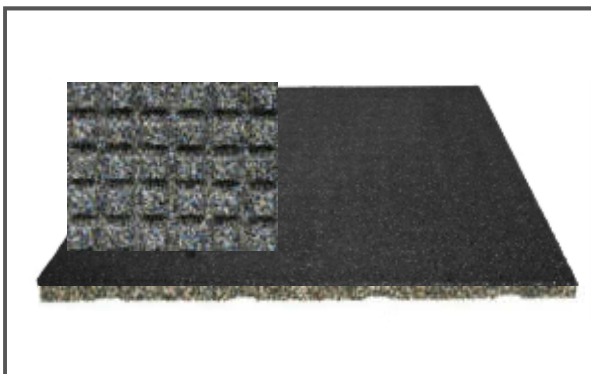
This mat is substantially greater than the proven Drainoflex drainage mat in your dimensions and provides an alternative dar. By creating an angular stilts, this mat higher demands on the slope and the ground. Also it is not so easy to handle due to their size while cleaning.

It has of course the same benefits and properties of softness and permeability as our proven Drainoflex drainage mat

Plate ware
44 kg/mat
1,00 qm

Long: 1000 mm
Broad: 1000 mm
High: 50 mm

Price € 59,00/qm
ex work plus tax



Size 1000 x 1000 x 40 mm
weight: 32 kg

Drainoflix Country 40 40 mm thickness

Drainoflex Megadrain 40 mm

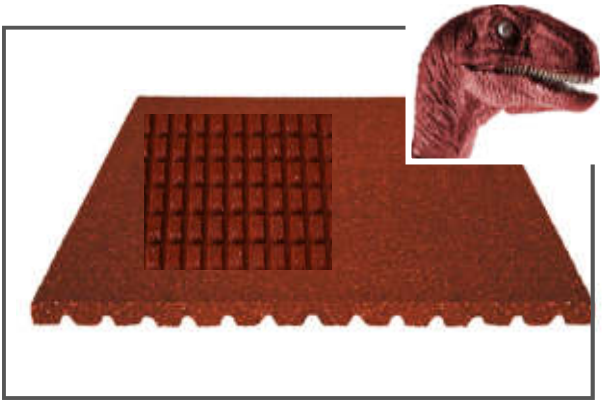
The new mat with the quick drainage. It is a bit harder, but still soft enough for your horse to feel good.

Due to its coarse structure, it drains almost twice as fast and has dried off more quickly in the surface during the winter months. The function of the mat is the same for all mats, only faster!

Plate ware
32 kg/mat
1,00 qm

Long: 1000 mm
Broad: 1000 mm
High: 40 mm

Price € 55,00/qm
ex work plus tax



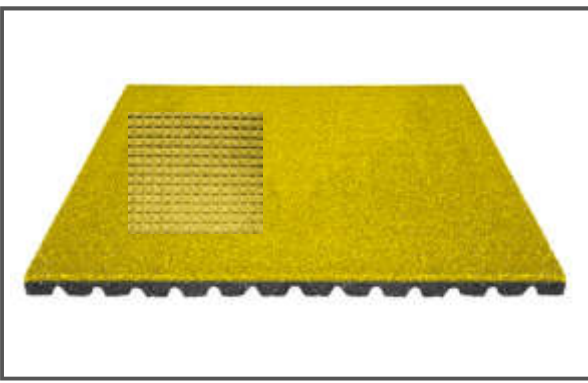
Size 1000 x 1000 x 60 mm,
weight: 56 kg

Drainosaurus Flex
60 mm thickness

Drainosaurus Flex 60 mm

The new mat with the Saurus effect, particularly stable and capable of drainage. Not only do dinosaurs feel comfortable there, but also your horse! Due to its coarse structure, it drains almost twice as fast and the surface dries faster, especially in the winter months. The function of the mat is the same for all mats, only faster!

Plate ware	Long: 1000 mm	Price € 64,00/qm
56 kg/mat	Broad: 1000 mm	ex work plus tax
1,00 qm	High: 60 mm	



Size 1000 x 1000 x 40 mm
weight: 32 kg

Drainoflixx Sun
40 mm thickness

Drainoflixx Sun 40 mm

Now the sun is rising! The new yellow straw mat with fast drainage. The color says it all and looks like straw. Firm enough to stand on and soft enough for your horse to feel comfortable too. Due to its coarse structure, it drains almost twice as fast and the surface dries faster, especially in the winter months. The function of the mat is the same for all mats, only faster!

Plate ware	Long: 1000 mm	Price € 99,00/qm
32 kg/mat	Broad: 1000 mm	ex work plus tax
1,00 qm	High: 40 mm	



Size 1000 x 1000 x 40 mm,
weight: 43 kg

Drainofixx Schotter 40 mm thickness

Drainofixx Schotter 40 mm

The alternative for Gravel-Areas! This mat is very good move on the entire surface drainable surfaces such as gravel, sand, gravel, soil, etc. columns. By creating flat underside mat is certainly open to substrates without having to bend sharply.

The mat is laid loose in the horse box, as a bed, in the paddock or in the open stall. You can optionally be combined with each litter. The horse-fair is insulating mat, fully capable drainage, slightly elastic and heat storing.

Plate ware	Long: 1000 mm	Price € 59,00/qm
43 kg/mat	Broad: 1000 mm	ex work plus tax
1,00 qm	High: 40 mm	



Size 1200 x 900 x 17 mm,
weight: 20 kg

Drainofixx Isoferm 17 mm thickness

Drainofixx-Isoferm 17 mm

This mat has been in the planning for a long time and we are now presenting our new puzzle mat for closed floor areas!

This mat is particularly good when there is no drain. The puzzle mats are laid loosely in the horse box or as a lying surface like a puzzle. They can be combined with straw, shavings, peat, hemp, linen straw or sawdust. The horse-friendly mat is insulating thanks to integrated air chambers on the underside, is elastic and heat-storing.

Plate ware	Long: 1200 mm	Price € 53,00/piece
20 kg/Plate	Broad: 900 mm	ex work plus tax
1,08 qm	High: 17 mm	



Size 10.000 x 1250 x 10 mm,
weight: 140 kg

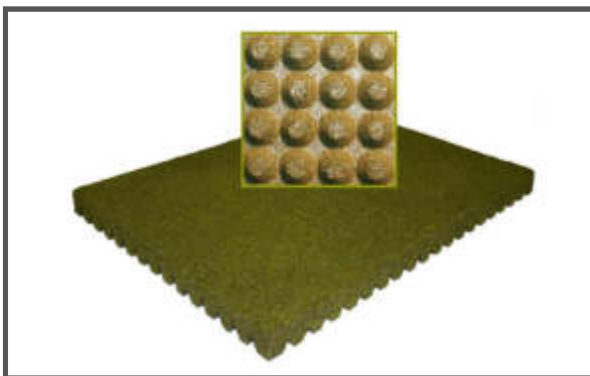
Drainofixx Sheet Material 10 mm

Drainofixx Sheet Material 10 mm

This sheet material can be laid over the entire surface for smooth concrete floors, steep descents, bridge crossings, etc. The sheet material can be glued or laid loose.

In the picture, for example, a bridge was laid out with sheeting to let the horses safely onto the paddock.

Sheet Material	Long: 10.000 mm	Price per Roll € 440,00/qm
140 kg/Roll	Broad: 1.250 mm	Price per meter € 44 (1,25 qm)
12,50 qm	High: 10 mm	ex work plus tax



Size 1000 x 750 x 50 mm,
weight: 24 kg

Drainoflex The Original 50 mm thickness

Drainoflex The Original 50 mm

The original Drainoflex drainage mat, invented by Mr. Martin Hanke, unchanged for 48 years, only improved! Laid the mat with the round stilts in the horse box or as a lying surface.

They can be combined with straw, shavings, peat, hemp, linen straw or sawdust. The horse-friendly mat is insulating thanks to integrated air chambers on the underside, is elastic and heat-storing.

Plate ware	Long: 1000 mm	Price € 77,00/piece
24 kg/Platte	Broad: 750 mm	ex work plus tax
0,75 qm	High: 50 mm	



Size: 160 x 200 x 40 mm, weight: 36 kg

The Drainoflex Rubber Paving Stone

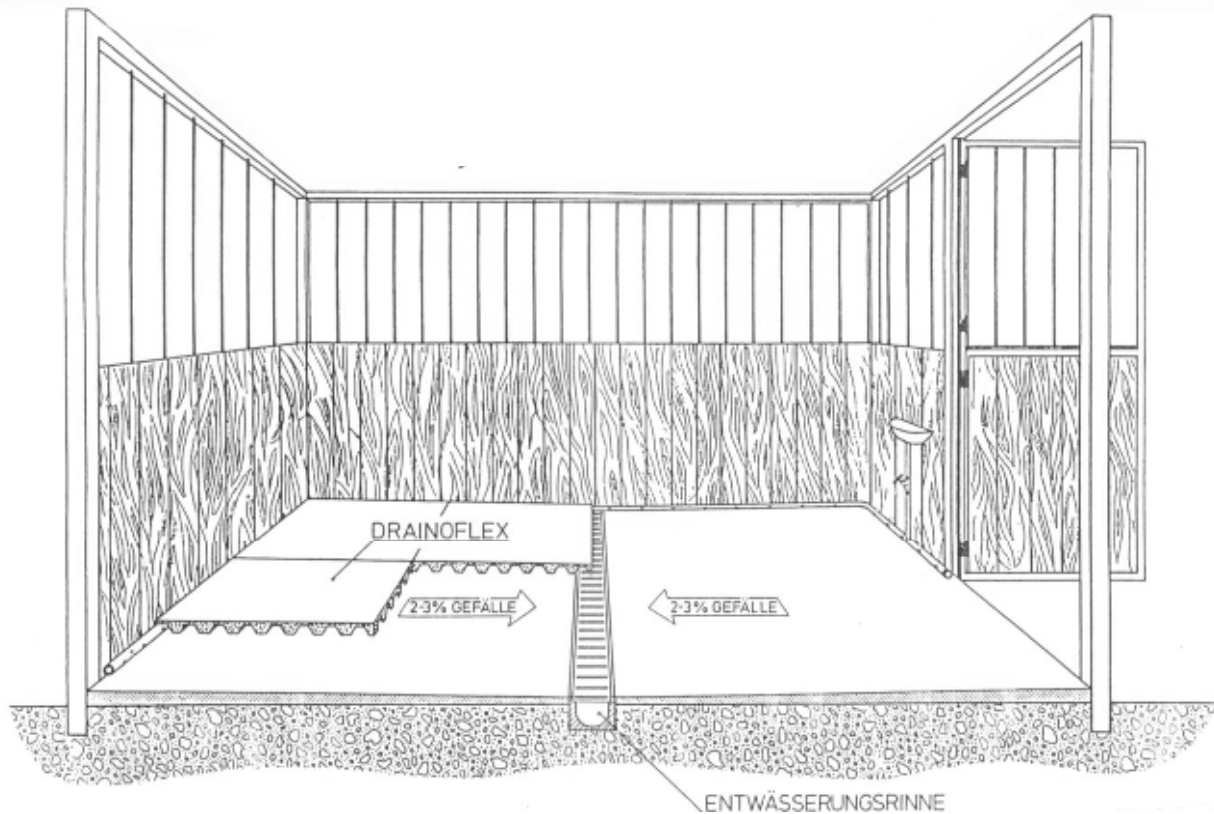
This Stone is for paddocks, studs, walker, yard areas, alleys, animal hospitations, washing areas and for the solarium areas. We only take the best EPDM-Quality, it is the highest quality material for the rubber paving stons, so long as you take plasure in. The Stones are easy to clean. The floor is easy to install. You can cut them with a knife.



Rubber Paving Stone	Long:	160 mm	Price € 72,00/qm
	Broad:	200 mm	Price € 2,06/piece
	High:	40 mm	ex works plus tax
36 kg/qm			
1,00 qm = 35 pieces			



Original Drainoflex-Rubber-Drain-Mats



How to do the placing

By placing the Drainoflex Rubber Filter Mats one should follow the directions as here below: For the inset of Drainoflex Rubber Filter Mats it is presupposed to have a hard betonfloor with a flush of min. 2 % an a drainage or a drain ground. The drainage may be a grill, a groove or a split floor. If this presupposed should not be available in the horse box, one can by using our „Aco-groove“ quick and cost-effective rebuild the floor.

The Drainoflex Rubber Filter Mats are layed out on the box floor and stay there by their own weight and solid Construction. As a rule one starts at the door and lays so far as possible whole plates. The cutting from the plates after the measures of the boxes can be done with a carpet knife.

The daily cleansing is very easy. Remove the dung with broom and shovel. Two times a year put them completely out and clean them with a water-pressure-machine. Put the mats dry back. Don't forget to flush the groove.

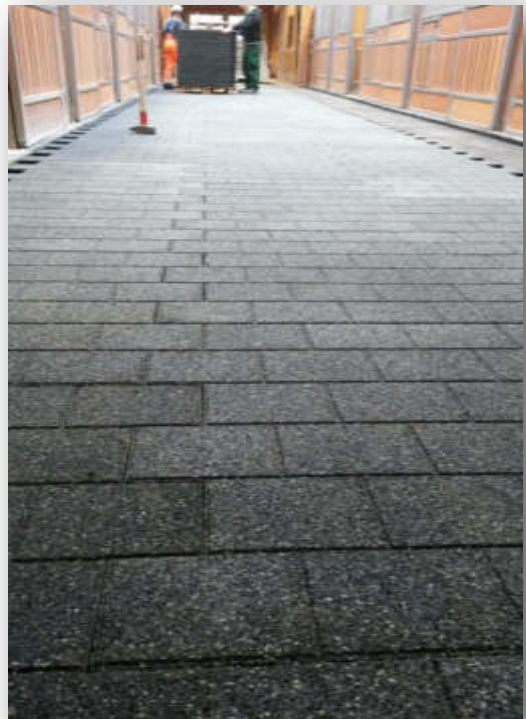


Original Drainoflex-Rubber-Drain-Mats





Original Drainoflex-Rubber-Drain-Mats





Original Drainoflex-Rubber-Drain-Mats





Original Drainoflex-Rubber-Drain-Mats

The Original from the inventor



Your

Martin Hanke

The official exhibitions



**MS Stalltechnik
Zum Treffpunkt 1
D-27412 Westertimke**

**Tel. 04289/400579
hanke@drainoflex.de
www.drainoflex.de**